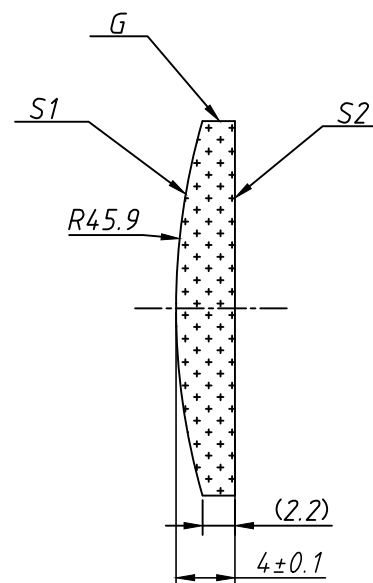
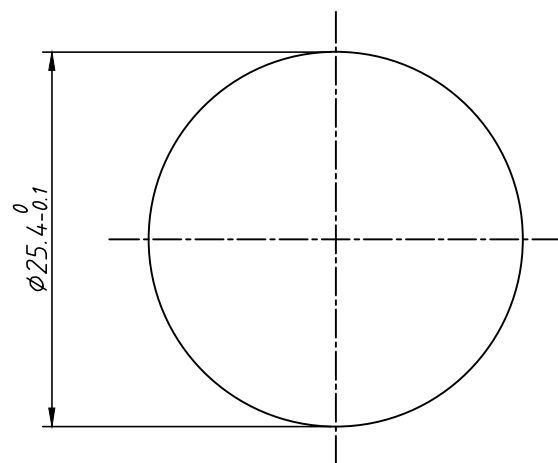


Isometric view 1: 1



Notes:

1. Materials: C7980 1D
2. Design Wavelength: 587.6nm
3. Focal Length: $f = +100.0\text{mm} \pm 1\%$
4. Back Focal Length(REF): $bf = 97.26 \text{ mm}$
5. Centration error: $\leq 2 \text{ arcmin}$
6. Clear aperture: $\geq 90\%$
7. G - Fine ground surface
8. Coating: AR/AR@1064nm(REFER TO COATING CURVES)
9. All dimensions are in mm

| Parameters | | | SHALOM EO www.shalomeo.com | UVFS Plano-convex D=25.4 F=100 WITH AR@1064nm COATING | | | | | | |
|----------------------|-----------------------------|-----------------------------|--------------------------------------|---|----------|------|-----------|-------------|-----|-------|
| | S1 | S2 | | Proprietary | | Name | Date | Part number | Rev | Scale |
| Shape | Convex | Plano | | The drawing is property of Hangzhou Shalom EO, any reproduction in part or as a whole without permission is prohibited. | DRAWN | YSF | 27/Apr/20 | 1102-077 | A | 2:1 |
| Radius of curvature | 45.85 | Infinity | | | APPROVAL | JT | 27/Apr/20 | | | |
| Surface quality | 10/5 S/D | 10/5 S/D | | | | | | | | |
| Surface Irregularity | $\lambda/10@632.8\text{nm}$ | $\lambda/10@632.8\text{nm}$ | | | | | | | | |
| Power(P-V) | $3\lambda/2@632.8\text{nm}$ | $\lambda/2@632.8\text{nm}$ | | | | | | | | |
| Protective chamfers | 0.2mm x 45° | 0.2mm x 45° | | | | | | | | |